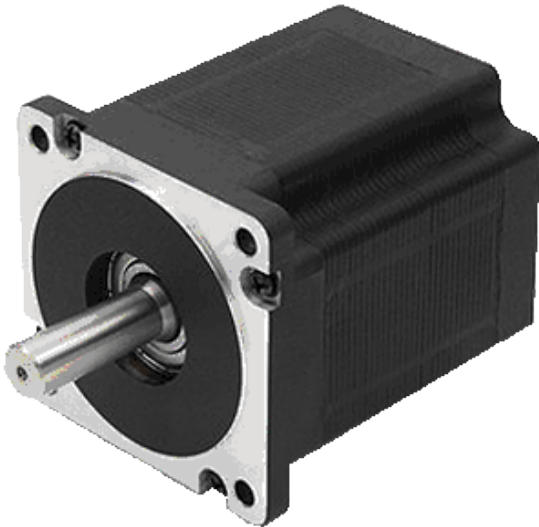


ST8918L6708-A

STEPPER MOTOR



High-torque stepper motor in size NEMA 34 (86 mm) with 1.8° step angle (full step). Ideal solution for direct drives because of its high torque in relation to the motor size.

An extensive range of customized shaft and cable versions as well as custom-made products are available upon a request.

Technical parameters

Flange	86 mm	Holding torque bipolar	933.38 Ncm
Size	NEMA 34	Resolution	1.8 °/step
Current per phase	6.7 A	Inductance per phase	2.7 mH
Rotor inertia	3000 gcm ²	Length	126 mm
Resistance per phase	0.54 Ohm	Weight	3.95 kg
Holding torque unipolar	660 Ncm		

Dimensions

