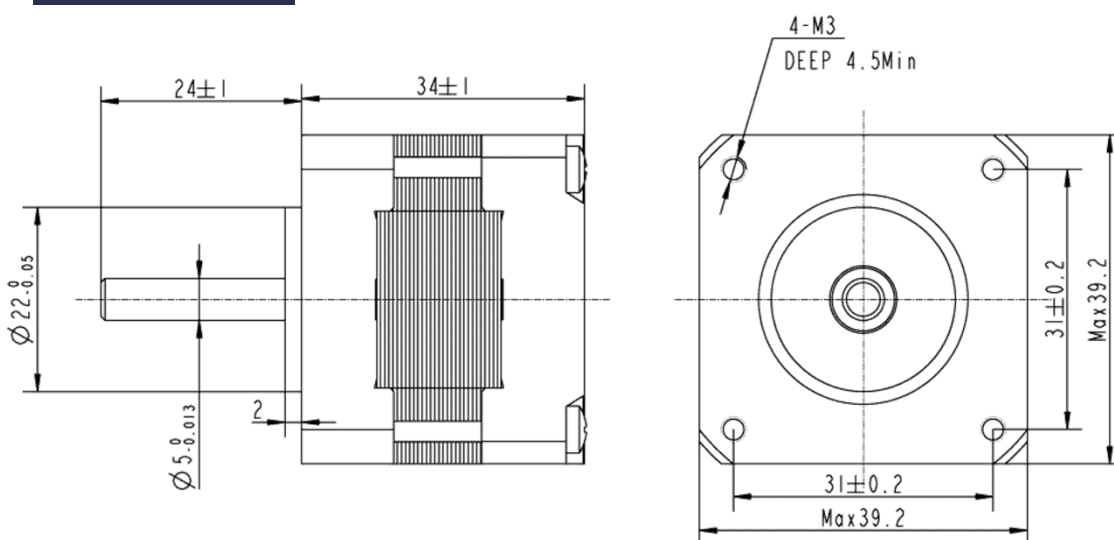


The FL39ST34-0306A is known for being one of the most user-friendly stepper motor models available. It operates with a supply voltage of 12V in quasi-static mode, making it a popular choice for a wide range of applications. These stepper motors find extensive use in small-sized devices, lighting equipment, miniature dispensers, medical equipment, and for solving automation challenges in technological processes that demand precise, rapid, and cost-effective actuator positioning. They are commonly employed in various automated systems such as 3D printers, CNC machines, engraving machines, scanners, and other mechanized mechanisms.

## Technical parameters

| Holding Torque | Step angle | Step angle accuracy | Phase current | Phase resistance | Phase inductance | Number of phases / leads | Rotor inertia        | Weight  |
|----------------|------------|---------------------|---------------|------------------|------------------|--------------------------|----------------------|---------|
| 1,3 kg*cm      | 1,8 deg    | ±5%                 | 0,3 A         | 40 Ohm           | 20 mH            | 2 / 6                    | 20 g*cm <sup>2</sup> | 0,18 Kg |

## Dimensions



## Wiring diagram

