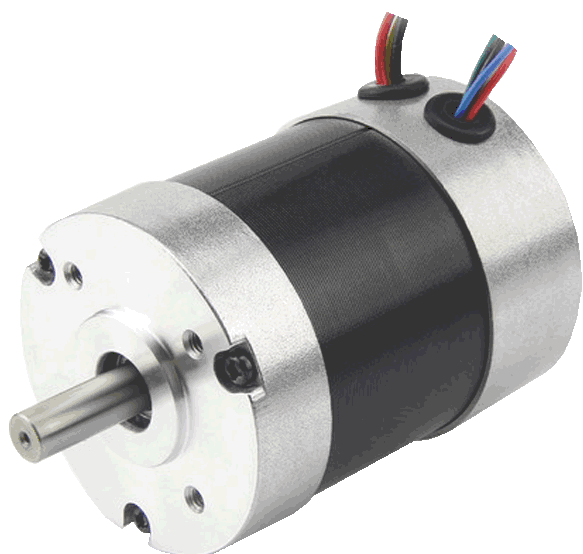


DB59S024035R-A

BRUSHLESS DC MOTOR



Brushless DC motor with high efficiency and quiet running properties. With a power output of 84 W, the DB59S024035R-A is one of the most powerful BLDC motors of this size.

For higher torques and a wider performance range we offer planetary gearboxes.

Technical parameters

Flange	56 mm	Weight	0.52 kg
Size	NEMA 23	Rated voltage	24 V
Rated power	84 W	Peak torque	69 Ncm
Rated current	5 A	Peak current	15 A
Rated speed	3500 rpm	Torque constant	4.5 Ncm/A
Rotor inertia	75 gcm ²	Line to line resistance	0.57 Ohm
Line to line inductance	0.63 mH	Length	53.6 mm

Dimensions

